



CP DVR USB Backup Process

Move the cursor to the "BACKUP", and press "ENTER", then the screen will show the following options.

BACKUP
USB BACKUP

USB BACKUP				
START TIME	2005-12-28 10 : 56 : 32			
END TIME	2005-12-28 12 : 00 : 00			
AVAILABLE SIZE	0512 MB			
CHANNEL	● 01	● 02	X 03	X 04
	X 05	X 06	X 07	X 08
	X 09	X 10	X 11	X 12
	X 13	X 14	X 15	X 16
HDD NUM	MASTER			
BACKUP TO USB	START			

1) START TIME:

Select the start time of the backup.

2) END TIME:

Select the end time of the backup.

3) AVAILABLE SIZE:

The information is available on the USB drive.

4) CHANNEL:

Select channels by pressing "ENTER" button to change the symbol in front of the channel number.

Symbol "X" means that this channel is not selected.

Symbol "●" means that this channel is selected.

5) HDD NUM:

Choose the HDD.

6) BACKUP TO USB:

Press "ENTER" to start backup the chosen file to USB.



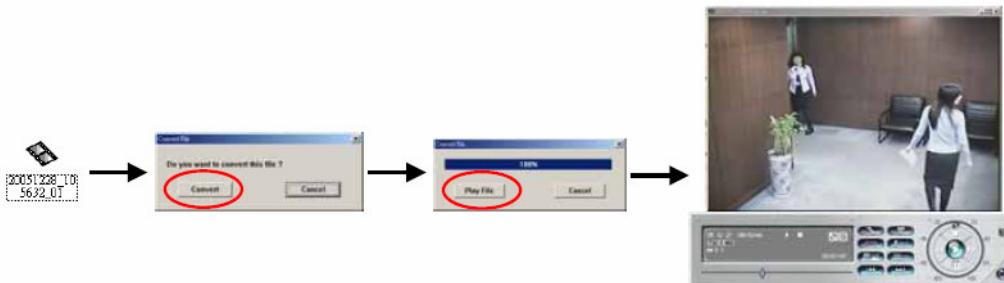
CP DVR USB Backup Process

USB BACKUP

Select "USB BACKUP" and then press "Enter".

NOTE:

- 1) The USB format must be "FAT 32".
- 2) If the USB is not supported by the DVR, then the "USB ERROR" message will be shown on the screen.
- 3) It is suggested that clear all the files in the USB before you backup files in your USB.
- 4) The file type of the backup files could use the licensed software to view the playback. Or convert to AVI format and playback with other software (such as Media Player or RealPlayer).



Move the cursor to the "BACKUP", and press "ENTER", then the screen will show the following options.

BACKUP	
USB BACKUP	
DISK BACKUP	

Select "DISK BACKUP" and then press "Enter".

DISK BACKUP				
START TIME	2006-03-24 12 : 20 : 00			
END TIME	2006-03-24 18 : 00 : 00			
AVAILABLE SIZE	4083 MB			
CHANNEL	● 01	● 02	X 03	X 04
	X 05	X 06	X 07	X 08
	X 09	X 10	X 11	X 12
	X 13	X 14	X 15	X 16
HDD NUM	MASTER			
BACKUP TO DISK	START			



CP DVR USB Backup Process

1) Press “+” and “-” buttons to open the **DVD / CD WRITER**.

Put the **DISK** into **DVD / CD WRITER**, and press “+” and “-” buttons again to close.

(NOTE: Use DVD-R DISK only)

2) Go to “DISK BACKUP” menu and set the start time, end time, channels and HDD number.

Note:

Select channels by pressing “ENTER” button to change the symbol in front of the channel number.

Symbol “X” means that this channel is not selected.

Symbol “●” means that this channel is selected.

3) After setting up the backup information, move the cursor to “START”, and press “ENTER”.

While the files are backup to **DISK**, users will see the backup completed percentage on the screen.

4) After backup files to **DISK**, “DISK BURN FINISH” will prompt on the screen.

Press “+” and “-” to take out the **DISK** from **DVD / CD WRITER**.

5) Put **DISK** into the **DVD / CD -ROM** of PC.

(O/S system: Windows XP, and Windows2000).

And then double click the file → Convert the file

→ Play the backup file at PC Side.

