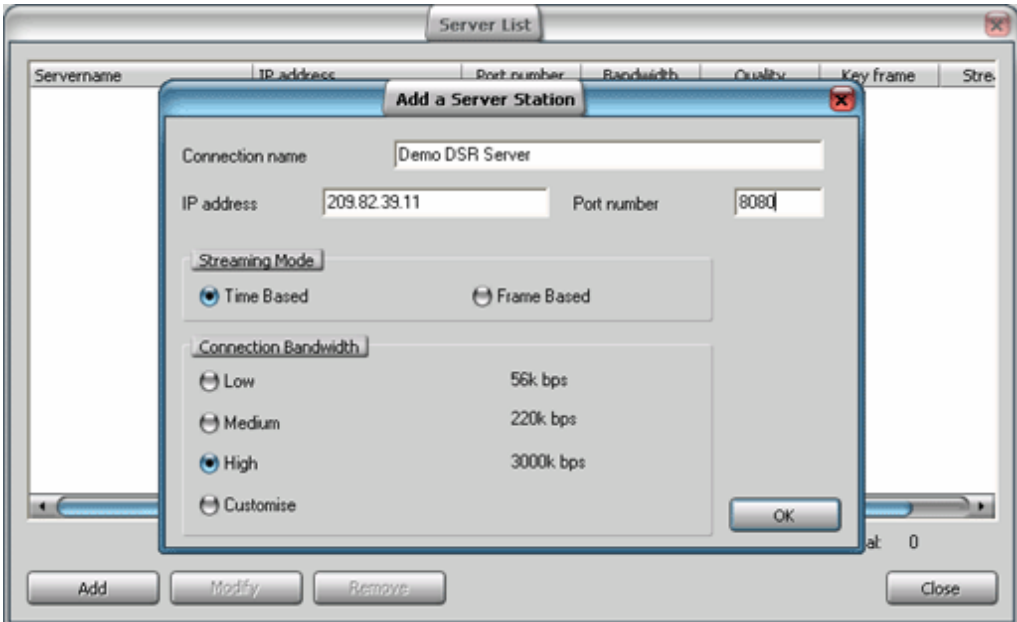


# DSR 3.0

## Remote Search Playback

Figure 1: Remote Server Management



**Connection Name** An alias you can use to distinguish servers

**IP Address** IP address of the remote server PC

**Port number** The HTTP Port number assigned in DSR Configuration -> Remote Service Manager on the remote server PC.

**Streaming Mode**

- 1. Time Based** Review in real time, frames may be dropped to maintain the time line
- 2. Frame Based** Show every frame regardless of the download time

**Connection Bandwidth** Select the option that most closely matches the network bandwidth. The streaming video quality and frame rate will be adjusted to meet the available bandwidth.



# DSR 3.0

## Remote Search Playback

- Once entered, these locations will become available from the **Server Name/IP Address** drop down list.
- Select the remote server, enter the user name and password with Playback permission assigned on that server and click the **Sign In** button to connect.

### Event

Uncheck any recording types you are not interested in and they will be excluded from your search results.

### Video Source

Select the **Server, Camera Title, Name, Date** and **Time** values and click **Start Search** to begin.

### Search Results

Use the **Stop Search** button to cancel searching. The system will show files found so far but not all files within the search criteria will be displayed.

When a search completes normally, the number of files found will be displayed beside **Normal Search Results (files)**:

Click the **File List** button to open the **Video Search File List** window or click on the **Play** button to start playing the first file found.

### Optional Motion Search

Further search within files found above for motion within specific areas using **Motion Search**:

Playback can create temporary files that are 'cut' from the original files based on motion within a specific area. These temporary files can then be played back as normal or permanently saved for future review. The original files from which they are taken remain unchanged.

The temporary files are stored in the following directory structure:

```
[Drive]\DSR-Postmotion\image\[Server PC Name]\[Camera Name]\[Date of Recording]\
```

The [Drive] can be specified in the Control Panel -> DSR Configuration -> Recording Setup -> Drive Usage under **Playback Motion Search Temporary File Location**.

The temporary files will remain in these folders until another motion search is performed on the same Camera/Date or until the files are manually deleted.

### To perform a Motion Search:

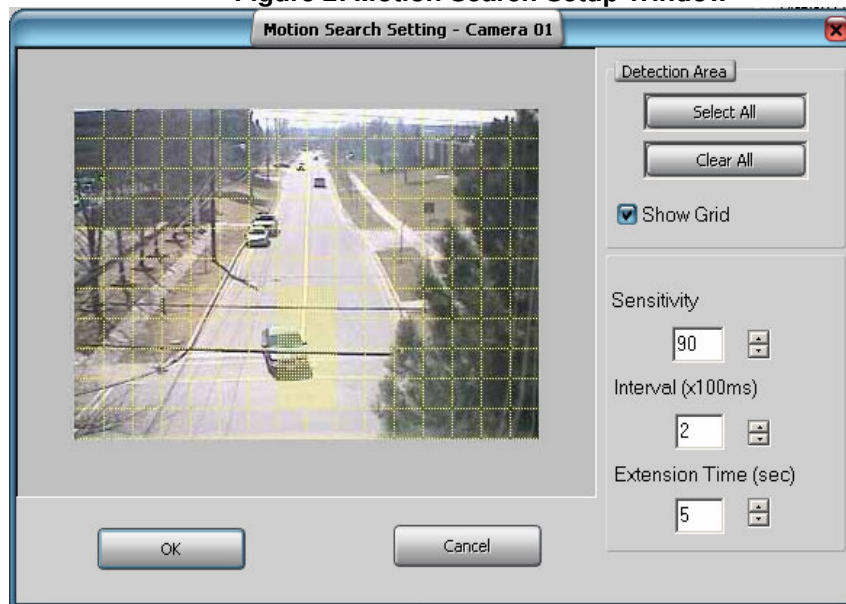
Perform a regular search as above until a list of files has been found.

Click on the **Motion Search** button to open the Motion Search setup window:

# DSR 3.0

## Remote Search Playback

Figure 2: Motion Search Setup Window



The first frame of the first file in the File List will be used as a reference to set up the motion detection area.

Select areas of the screen for Motion Detection by clicking on the squares to highlight that area.

Use the Motion Settings to fine-tune your selection:

- **Sensitivity** – set the relative sensitivity for motion detection. The higher the number the more sensitive motion will be captured. Trial and error may have to be used to find the optimum setting here.
- **Interval** - this is the time between successive frames used as reference for detecting motion. The default value (200ms) is optimal in most cases.
- **Extension Time** – this is the number of additional seconds after the portion where motion is detected that will be included in the resultant files.

Click **OK** to begin Motion Search processing.

The number of motion search files created will be displayed next to **Motion Search Result (files):**

Click **File List** to view the resultant files or click **Play** to begin playing the file list beginning with the first file found.

### Using The Video Search Playback

When a the **Play** button is click from the search window or a file is selected from the **File List** window, the Video Search Playback screen will play back the files.

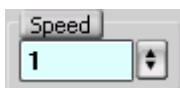
# DSR 3.0

## Remote Search Playback

Figure 3: Video Search Playback Interface



Select a resolution for play back. Video files will open in their recorded resolution by default. Use this drop down list to choose another resolution.



Select the play back speed from 1/5<sup>th</sup> of the normal speed to 10 times normal speed.



**Auto Play** - checked means files automatically start playing when loaded.



# DSR 3.0

## Remote Search Playback

**Continuous** - checked means that play back will continue playing the next file in the list after the current one finishes. When this is unchecked, playback will stop at the end of the current file.

**Show/Hide** - the control on the bottom of the play back windows can be hidden for a cleaner interface. When this is checked, the lower controls will be shown.



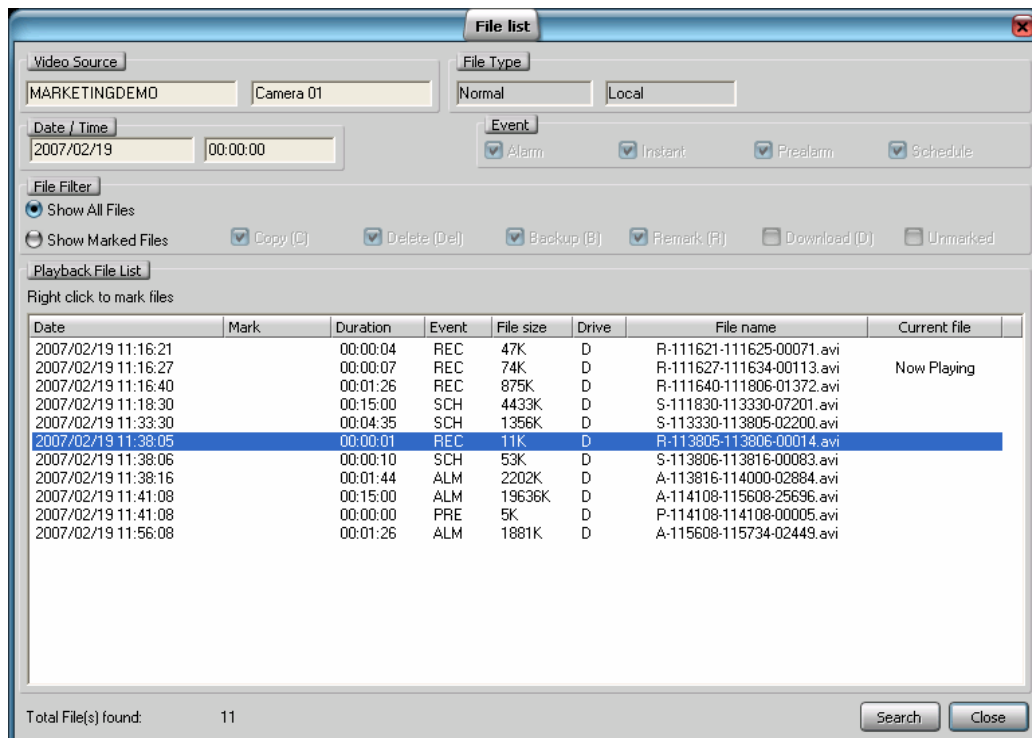
Click the **Search** button to bring up the original **Search** window. Use the **up** and **down** arrows to automatically load the **Next** and **Previous** days video for the selected camera.



### File List

Open the File List to view and mark files loaded for playback:

Figure 4: Video Search File List



- Select a file to view a small thumbnail of that file.
- Right click on a file to **Preview**, **Mark for Copy**, **Mark for Backup**, **Mark for Delete**, **Mark for Remark**. **Mark for Download** is only available when performing Remote Playback.

# DSR 3.0

## Remote Search Playback

- Multiple files can be selected for marking by click holding the mouse and dragging over the files or by holding Ctrl or Alt and selecting files.

**Preview** – view the first frame of the file in it's original resolution.

**Mark for Copy, Backup, Delete, Download** – User can review and mark files from the list as necessary for each function. Once satisfied that all files have been marked for their respective operations, click on **FileKeeping** from the main Playback screen to perform the operations.

**Remark** – Allows user to add comments to individual video files.

Clicking on **Show Marked Files** allows the user to filter the list according to marked files only.

**Search** button will bring up the original search window.

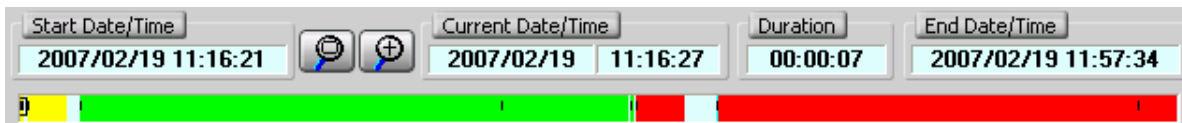


**File Keeping** - After all files of interest have been marked for **Copy, Backup, Delete** or **Download** from the **File List** window, the **FileKeeping** window should then be used to perform these operations.



**Always on top** - Toggle this button to keep the Playback window on top of all other open windows. The default position, shown here, is enabled.

Figure 5: Video Search Playback Info



- This graphical area displays information about files currently playing.
- Start Date/Time** and **End Date/Time** represent the beginning and end of the graphical bar at the bottom. The far left is the Start time and the far right is the End time.
- Video files are represented within this graph depending on their length and the type of recording:
  - Yellow** – Instant Recording
  - Green** – Scheduled Recording
  - Red** – Alarm Recording
  - Blue** – Pre-Alarm Recording
- The small black lines represent the beginning of a video file. The current file playing has a small black square around its mark (it's the first file in the figure above.)
- Use the zoom in/out buttons to narrow/expand the time frame displayed.




### Snapshots



When a video is paused, a snapshot of the current frame can be taken.

- Click  to switch into snapshot mode and enable the snap shot

buttons

- Click  to return to normal video mode.
- Click  and  to enlarge or shrink the snapshot.

Contact Information:



Gary Streisel: 306-596-3937

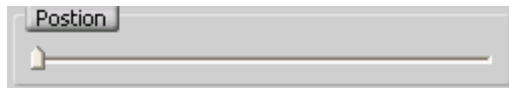
ElectricEyes Network Inc. 2514 Dewdney Ave, Regina, SK, S4R 1H7

Email: [info@electriceyes.com](mailto:info@electriceyes.com) Web Address: [www.electriceyes.com](http://www.electriceyes.com)


# DSR 3.0

## Remote Search Playback

- Click  to save the snapshot in either JPEG or Bitmap format. A browser dialog will appear to set the save location.
- Click  to print a copy of the snap shot.



the slider.

- Click  to add a header, footer or comments to the snap shot print out.

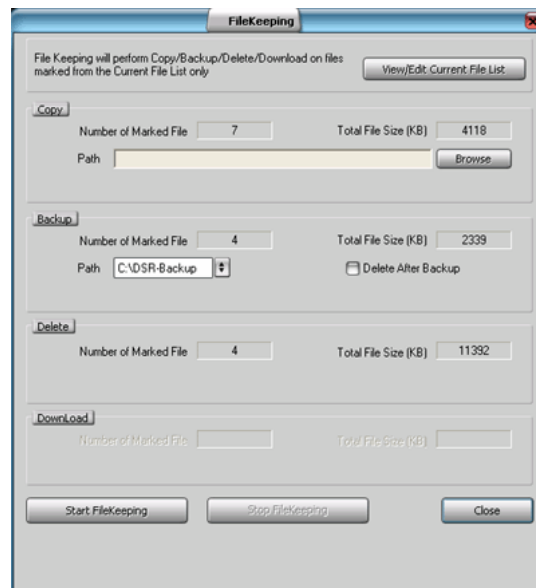
The **Position** slider shows the current position in a file and allows jumping forward or backwards within a file by clicking and dragging



Playback controls – Play, Pause, Stop, Skip to Previous File, Previous Frame, Next Frame, Skip to Next File.



### Using File Keeping



**Note:** only files marked in the current File List will be displayed and processed here. This means that if the user performs a search for a particular day and camera, marks files from that file list and then goes back to perform different search which produces a different file list, only files marked from the latest file list will be displayed and processed here.



# DSR 3.0

## Remote Search Playback

The number of files marked for each operation is detailed on this window. The **View/Edit Current File List** button allows users to verify that all files of interest are displayed.

### Copy

Use the **Browse** button to specify the copy location. This location can be a local drive or a formatted, blank CD.

Video files are copied under the user-defined path using the standard folder structure:

```
[Path]\DSR-Video\image\[Server PC Name]\[Camera Name]\[Date of Recording]\
```

Therefore, if the user selects the root of a drive as the destination for the copied files, they will still be accessible through standard playback. This can be useful when copying files to a formatted CD, flash memory or a network drive as they can then be reviewed with Playback on another system.

Copying files to the root of a permanent drive on the server PC will cause duplicates to appear in Playback search since a copy of the same file exists in the same folder structure on multiple drives. To avoid this scenario, the **Backup** option should be used.

If the destination path is a folder under a drive then the video files will only be accessible outside the software through Windows Explorer and Media Player.

### Backup

Files can be copied (the original file remains) or moved (if **Delete after Backup** is checked, the original file is deleted) to a standard folder structure on any accessible drive. These files can then be accessed through **Video Search** playback by selecting the **Backup** option on the search screen and are searched separately from normal video files.

Backup files are stored under the following directory structure:

```
[Drive:]\DSR-Backup\image\[Server PC Name]\[Camera Name]\[Date of Recording]\
```

### Delete

These files will be permanently deleted from the system.

### Download

The download option is only available when reviewing video files on a remote server using either **Video Search** or **Quad Playback**.

Files will be downloaded to the system drive under the following folder structure:

```
[System Drive:]\DSR-Video\remote\[Remote Server PC Name]\[Camera Name]\[Date of Recording]\
```

The downloaded files will then be accessible under **Normal/Local** searching. They can be accessed in the same way as files recorded locally on the PC with the only difference being the Server Name under which they are stored.