



DSR 3.0

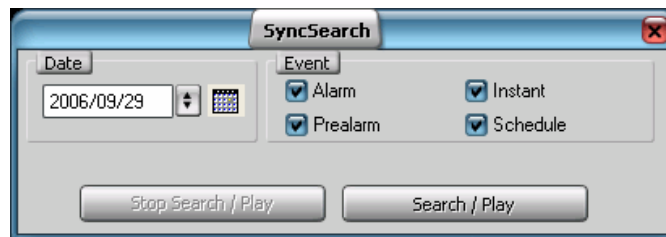
Quick Sync Search Playback

Sync Playback

Sync Playback allows video files recorded from different cameras during the same time period to be played back simultaneously. User selects a date and all available video files from that day are loaded for playback. The user can then select a specific time within that date and specific cameras to playback.

To begin, select a date for playback and uncheck any **Event** filters that are not of interest:

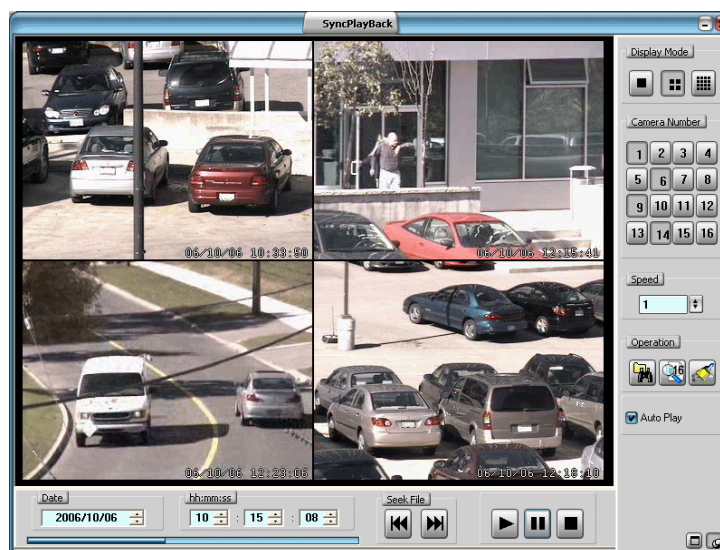
Figure 1: Sync Search Window



Click on the **Search/Play** button to begin the search. Once all files from that day have been found, they will be loaded into Playback. Sync playback will start playing back the earliest files from that days recording.

If the **Stop Search/Play** button is clicked before the search completes then only the files found so far will be loaded into Sync playback.

Figure 2: The Sync Playback Interface





DSR 3.0

Quick Sync Search Playback

Bottom Panel Controls

Date:

Select the date from which to load files

Time hh::mm::ss:

Select the **Start** time

Seek File:

Jump to the **Previous/Next** file. This will effectively change the **Start Time** to the beginning of the previous/next file. The previous/next file will be the closest file in time from any camera.

Play, Pause, Stop:

Video controls for all files

Top Right Panel Controls

Display Mode:

Select 1, 4 or 16 camera Sync Playback. Playback screen resolution will be adjusted for each display mode.

Camera Number:

Select which cameras will be included in Sync Playback. Only cameras with files available will be selectable. To view the **Camera Title**, mouse over the camera number or the display area.

Speed:

Select the Playback Speed.

Auto Play:

Check means files automatically start playing when loaded.

Bottom Right Panel Controls

Operations:



Set Start Time

This button brings up the original **SyncSearch** window where users can select the **Date** and **Events** again.



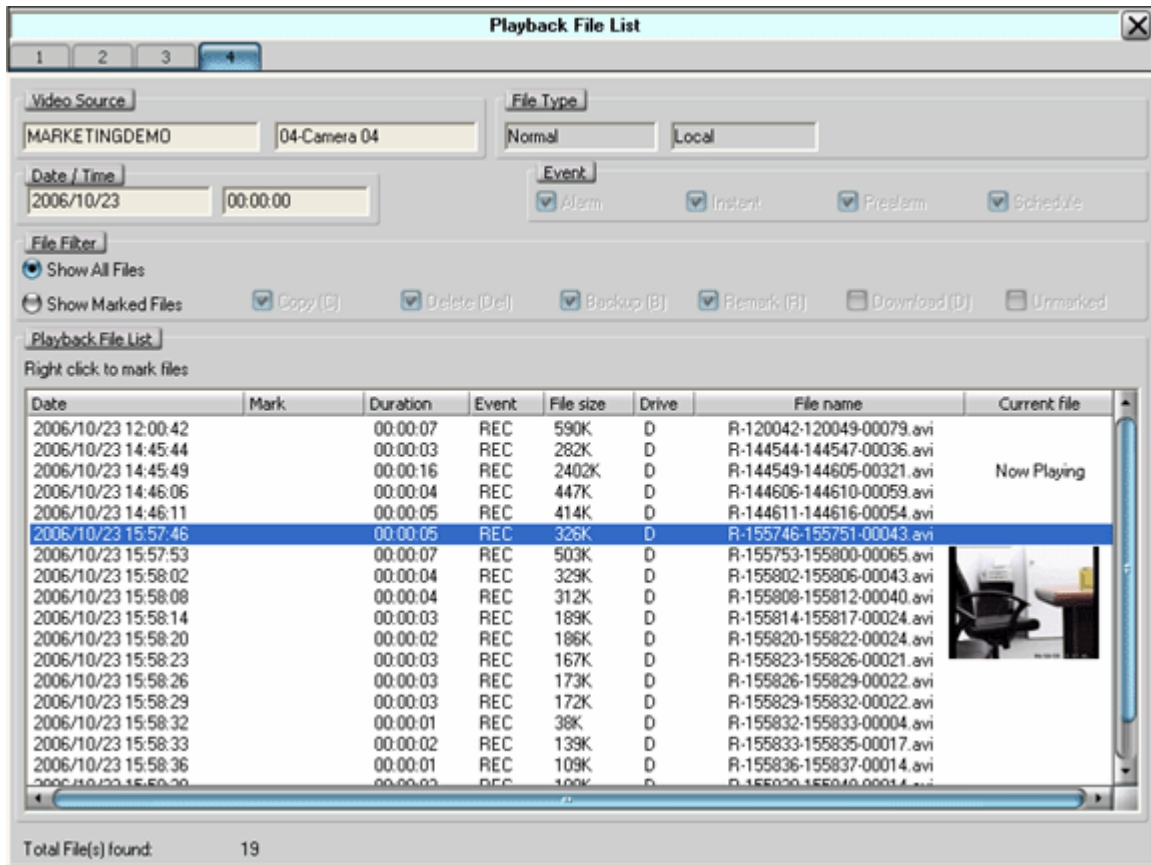
File List

Open the File List to view and mark files loaded for playback:

DSR 3.0

Quick Sync Search Playback

Figure 3: Sync Playback File List



- Use the tabs on top to view files under different cameras.
- Select a file to view a small thumbnail of that file.
- Right click on a file to **Preview**, **Mark for Copy**, **Mark for Backup**, **Mark for Delete**, **Mark for Remark**. **Mark for Download** is not available for **Sync Playback** since all files are local.
- Multiple files can be selected for marking by click holding the mouse and dragging over the files or by holding Ctrl or Alt and selecting files.

Preview – view the first frame of the file in it's original resolution.

Mark for Copy, Backup, Delete – User can review and mark files from the list as necessary for each function. Once satisfied that all files have been marked for their respective operations, click on [FileKeeping](#) from the main Playback screen to perform the operations.



DSR 3.0

Quick Sync Search Playback

Remark – Allows user to add comments to individual video files.

Clicking on **Show Marked Files** allows the user to filter the list according to marked files only.



File Keeping

After all files of interest have been marked for **Copy, Backup, Delete** or **Download** from the **File List** window, the [FileKeeping](#) window should then be used to perform these operations.



Check this button and your selected files will start to playback immediately. If this button is not checked, then the Play button must be clicked to start play back.



Restore

If the Playback window has been moved or resized, this button will bring it back to the original full screen position.

When performing synchronized play back over a long period of time and involving a lot of smaller files, the files may go out of sync due to the extra processing required to open and close multiple files simultaneously. If this happens, the **Restore** button will re-synchronize all files.



Always on top

Toggle this button to keep the Playback window on top of all other open windows. The default position, shown here, is enabled.